



**Strong in every detail.  
Reliable in every task.**

**NEW K-SERIES**



## Benchmark-setting performance.

The new ALTENDORF K-SERIES stands for maximum **precision, efficiency, and speed** – developed for workshops that aim to deliver top performance every single day. With feed speeds of up to 15 m/min, perfect edges are produced in record time.

### Flexible for every requirement

Whether wood, wood-based materials, or plastics – the K-SERIES processes virtually any material with precision and reliability. Its modular design allows for individual configurations, making it ideal for flexible workshops all the way up to full production lines.

### Highlights of the new generation

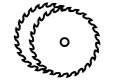
- Front-mounted fine adjustment during operation – saves setup time
- Edge magazine with optional interchangeable cartridges – faster material changes
- Tool-free motor change on the corner rounding unit – more speed, less effort
- LED progress indicator and RGB status bar – full control at a glance
- Sensor-based dual trimming system – precise and material-friendly
- Advanced control system with pictograms – intuitive and easy to understand
- Oil-free operation – less maintenance, clean workpieces
- Integrated storage solutions – for a more organized workspace

### Ready for the digital future

The K-SERIES integrates seamlessly into Altendorf's digital infrastructure – enabling future-proof connectivity, predictive services, and smart production processes.

### Quality Made in Germany

Built for everyday use: robust, durable, precise. The ALTENDORF K SERIES stands for "Made in Germany" – delivering maximum cost efficiency and reliability.



Double cross-cut saw with sensory workpiece detection



Edge magazine with interchangeable cassettes cartridges



Front-side fine adjustment



Smart storage space



New intuitive control system



Prepared for ALTENDORF NEXUS



Oil-free operation



Tool-free motor replacement



LED progress indicator

# Next-generation highlights

Comfort meets intuitive operation: the new K-Series saves time, enhances safety, and makes edge processing effortless.



**Edge magazine with interchangeable cassettes cartridges:** Integrated into the machine, it reduces handling steps and setup time – edge material can be changed in under 30 seconds, at ergonomic working height and easily operated even with gloves.

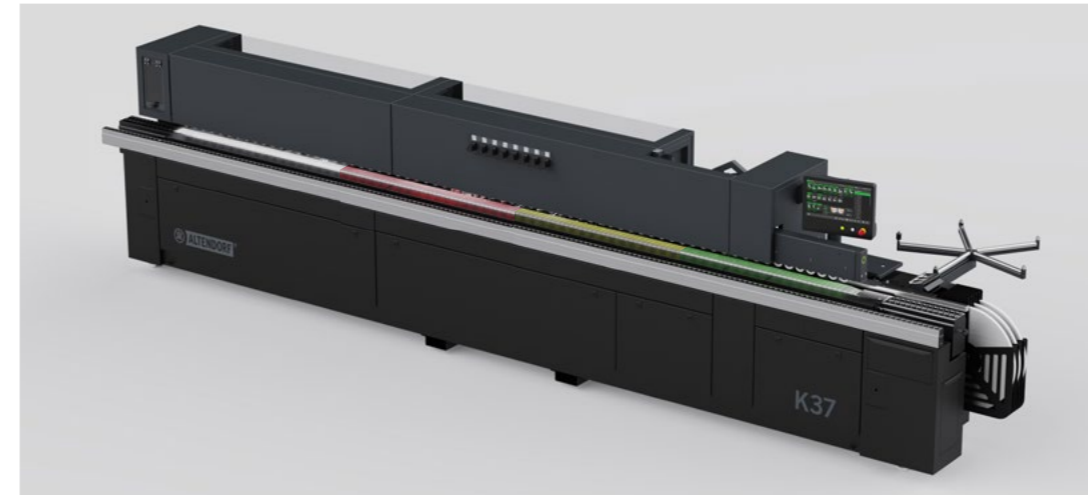
**Tool-free motor replacement for the corner rounding unit:** With a preset interchangeable motor and an integrated quick-change system, setup times when changing the corner radius are significantly reduced. The motor can be replaced in just a few seconds– without any readjustment or manual settings.



**Front-side fine adjustment:** Precise fine-tuning of milling units and the radius scraper during operation – ideal for sensitive real wood veneer and noticeably reduced setup times.



**LED progress indicator:** A segmented LED ring indicates whether a new workpiece can be fed directly into the machine, without the need to look at the display. Green means: feed active, machine ready, infeed interlock released. When a workpiece is fed in and detected, the ring switches off and gradually fills during machining. Yellow signals a warning, red indicates an emergency stop. If the feed is switched off, the ring remains white.



**Double cross-cut saw with sensory workpiece detection:** Two powerful motors and precision linear guides ensure exact trimming cuts on the front and rear – even at short cycle times. A sensor automatically detects the workpiece, enabling particularly gentle processing. The trimming saws are adjustable by 12.5° and can be set directly via the front display.

Motor power: 2 × 0.28 kW  
Speed: 12,000 rpm



**RGB status bar on the print bar:** A continuous light strip signals the machine status in real time – clearly visible, directly on the machine. Green indicates operational readiness, white signals standby mode, yellow warns of faults, and red indicates an emergency stop. This allows you to see at a glance when the machine is ready.



**Smart storage space:** Rear drawers and two front access flaps provide space for tools, accessories, and consumables – neatly stored and always within easy reach.



**Advanced control function for corner milling:** More speed, more possibilities – for higher productivity in corner rounding. Even short workpieces from 140 mm can now be processed safely and precisely.



**Texture Finish:** A release agent spray system combined with brushes ensures clean joint areas. Adhesive residues and liquids are gently removed – for perfectly cleaned surfaces from matte to high-gloss.



**ALTEMDORF NEXUS IIoT:** With this IIoT platform, you can network your machines – for greater transparency, less downtime, and easier maintenance.

# ALTENDORF **K34** – Your compact

When performance gains perspective.

**For those who expect more.**

When good is no longer enough, the new ALTENDORF K 34 delivers powerful, everyday performance – for businesses seeking real relief in daily operations. More speed, less rework, clear and intuitive operation.

**More possibilities. More quality.**

The K 34 combines the modular K-SERIES with powerful units for clean, precise edges – ideal for growing businesses. Fast changeovers, clean adhesive application, and strong results with ABS, melamine, or real wood.

**Simply powerful. Simply smart.**

With optional interchangeable cartridges, LED progress indicator, tool-free motor change, and intuitive control, the K 34 is ready for any challenge – from single pieces to series production.

**ALTENDORF – your partner in craftsmanship.**

With the K 34, you invest in the next generation of productivity – robust, reliable, Made in Germany.

## Technical features

- Feed rate up to 15 m/min – for maximum throughput and efficiency
- Compact design – stable, space-saving, and service-friendly
- Approx. 6 minute heat-up time – quick start thanks to the interchangeable glue pot
- Adhesive change system – for clean color and glue changes
- Zero-joint technology (optional) – invisible glue line, perfect finish
- Intuitive control – safe, simple, and user-friendly
- 15" touchscreen with 3D view – all information clearly at a glance
- Rotatable & tiltable control panel – ergonomically adjustable
- Clear display with pictograms – fast orientation
- USB port & operating hours counter – data and usage always under control
- Milling unit & radius scraper adjustable during operation – saves setup time
- Edge magazine with optional interchangeable cartridges – fast material changes
- Sensor-based dual trimming system – precise and gentle
- Tool-free motor change on the corner rounding unit – reduced setup time
- LED & RGB indicators – machining status at a glance
- Advanced corner rounding control – higher speed, shorter workpieces
- Oil-free – no central lubrication system, less effort, clean workpieces
- NEXUS IIoT-ready – prepared for the digital workshop

## Suitable for the following materials



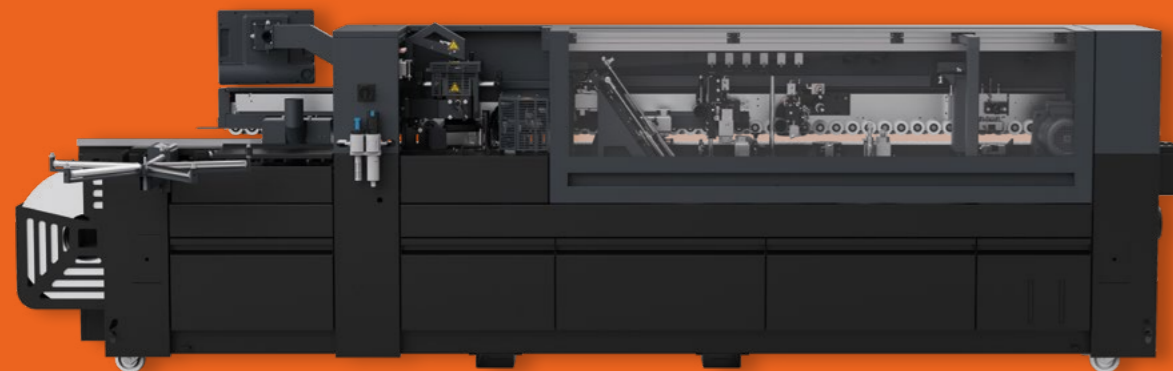
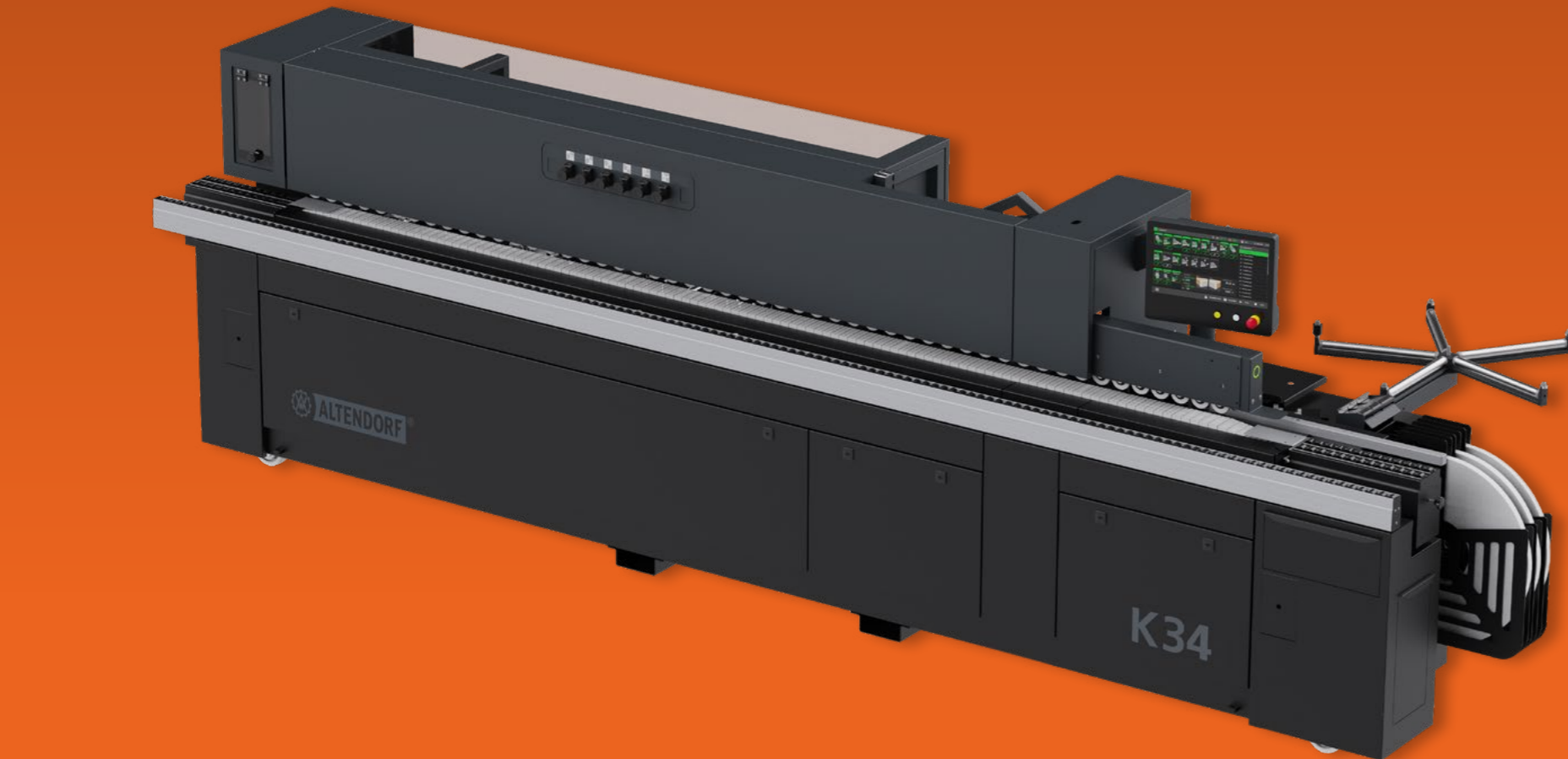
Wood



Wood-like



Plastics

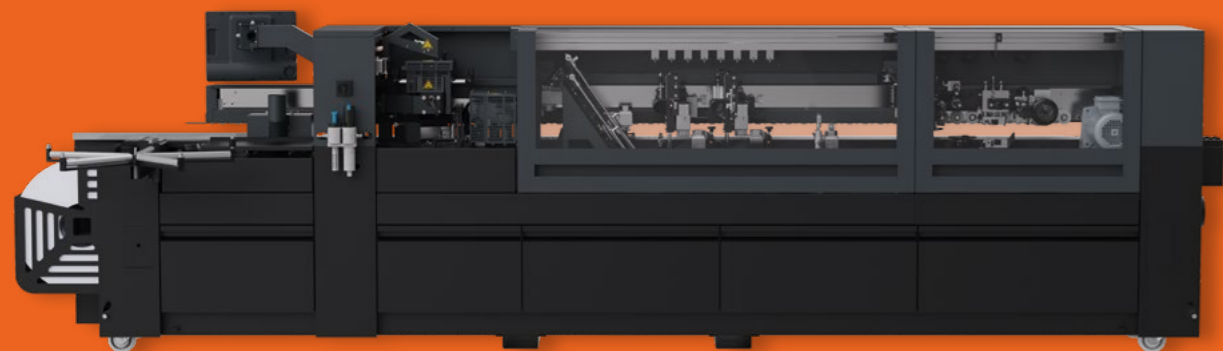


Discover Altendorf K 34



Image for illustration purposes. Details may vary.

# ALTENDORF **K36** – Your all-time favourite



*Discover Altendorf K 36*



Image for illustration purposes. Details may vary.

## When precision knows no compromise.

### **For those who demand the maximum every day.**

The ALTENDORF K 36 is built for the highest standards – powerful, robust, and absolutely reliable. Feed speeds of up to 15 m/min, a solid machine design, and precise, finely adjustable units deliver this performance day after day in real-world operation.

### **More options. More accuracy.**

Optionally equipped with a second milling unit and a multi-radius scraper, the K 36 delivers even more precise results – for workpieces where every detail matters.

### **Sustained performance meets attention to detail.**

Whether one-off pieces or series production – with the K 36, you work efficiently, flexibly, and with absolute precision over the long term. The perfect choice for performance-driven professionals with a clear vision.

### **Ready for the highest demands.**

With the K 36, you choose maximum performance – day after day, edge by edge. Made in Germany. Built for makers.

## Technical features

- Feed rate up to 15 m/min – for maximum throughput and efficiency
- Compact design – stable, space-saving, and service-friendly
- Approx. 6 minute heat-up time – quick start thanks to the interchangeable glue pot
- Adhesive change system – for clean color and glue changes
- Zero-joint technology (optional) – invisible glue line, perfect finish
- Intuitive control – safe, simple, and user-friendly
- 15" touchscreen with 3D view – all information clearly at a glance
- Rotatable & tiltable control panel – ergonomically adjustable
- Clear display with pictograms – fast orientation
- USB port & operating hours counter – data and usage always under control
- Milling unit & radius scraper adjustable during operation – saves setup time
- Edge magazine with optional interchangeable cartridges – fast material changes
- Sensor-based dual trimming system – precise and gentle
- Tool-free motor change on the corner rounding unit – reduced setup time
- LED & RGB indicators – machining status at a glance
- Advanced corner rounding control – higher speed, shorter workpieces
- Oil-free – no central lubrication system, less effort, clean workpieces
- NEXUS IIoT-ready – prepared for the digital workshop

## Suitable for the following materials



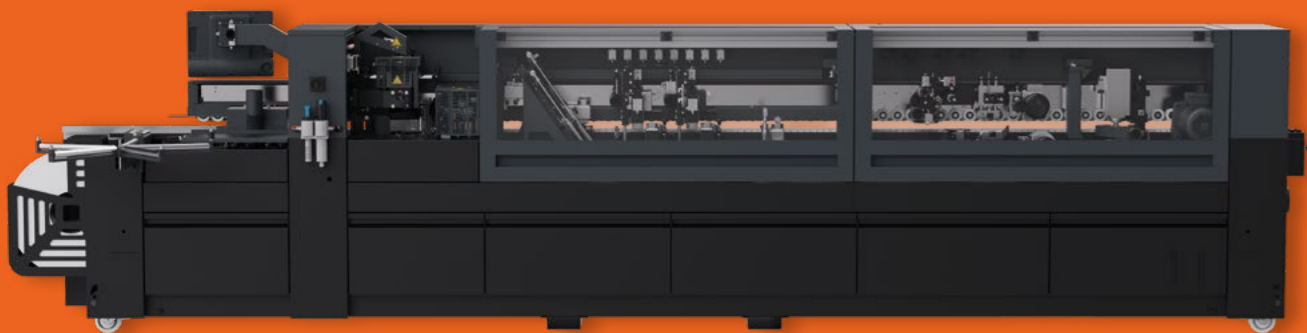
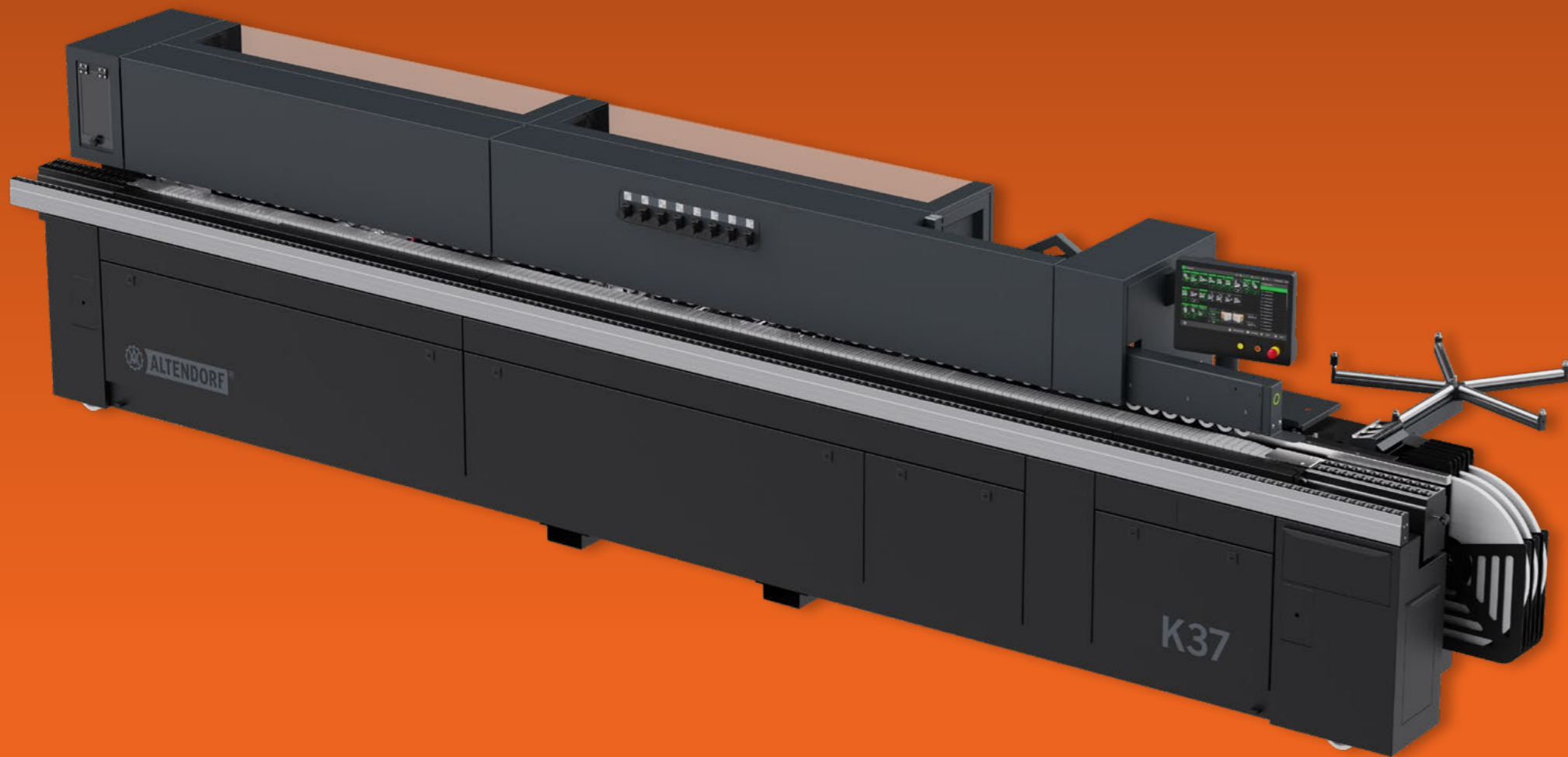
Wood



Wood-like



Plastics



*Discover Altendorf K 37*



Image for illustration purposes. Details may vary.

# ALTENDORF **K37** – Your maximum

When only the maximum will do.

**Our largest model. Your competitive edge.**

The ALTENDORF K 37 is the most powerful model in the series – uncompromising in performance, comfort, and endurance. Advanced processing units, exceptional feed stability, and ergonomic operation maintain this level even with high volumes and demanding material sequences.

**More comfort. More control.**

The generous 15” touchscreen with intuitive control redefines user-friendliness – enabling fast setup, perfect overview, and maximum operating comfort.

**A true competitive advantage.**

With innovative features, outstanding stability, and unrivaled power, the K 37 sets the benchmark in its class – engineered for the highest demands and built for continuous operation.

**K 37 – maximum performance.**

Choose technology that delivers on its promise. For perfection without compromise. Made in Germany.

## Technical features

- Feed rate up to 15 m/min – for maximum throughput and efficiency
- Compact design – stable, space-saving, and service-friendly
- Approx. 6 minute heat-up time – quick start thanks to the interchangeable glue pot
- Adhesive change system – for clean color and glue changes
- Zero-joint technology (optional) – invisible glue line, perfect finish
- Intuitive control – safe, simple, and user-friendly
- 15” touchscreen with 3D view – all information clearly at a glance
- Rotatable & tiltable control panel – ergonomically adjustable
- Clear display with pictograms – fast orientation
- USB port & operating hours counter – data and usage always under control
- Milling unit & radius scraper adjustable during operation – saves setup time
- Edge magazine with optional interchangeable cartridges – fast material changes
- Sensor-based dual trimming system – precise and gentle
- Tool-free motor change on the corner rounding unit – reduced setup time
- LED & RGB indicators – machining status at a glance
- Advanced corner rounding control – higher speed, shorter workpieces
- Oil-free – no central lubrication system, less effort, clean workpieces
- NEXUS IIoT-ready – prepared for the digital workshop

## Suitable for the following materials



Wood



Wood-like



Plastics

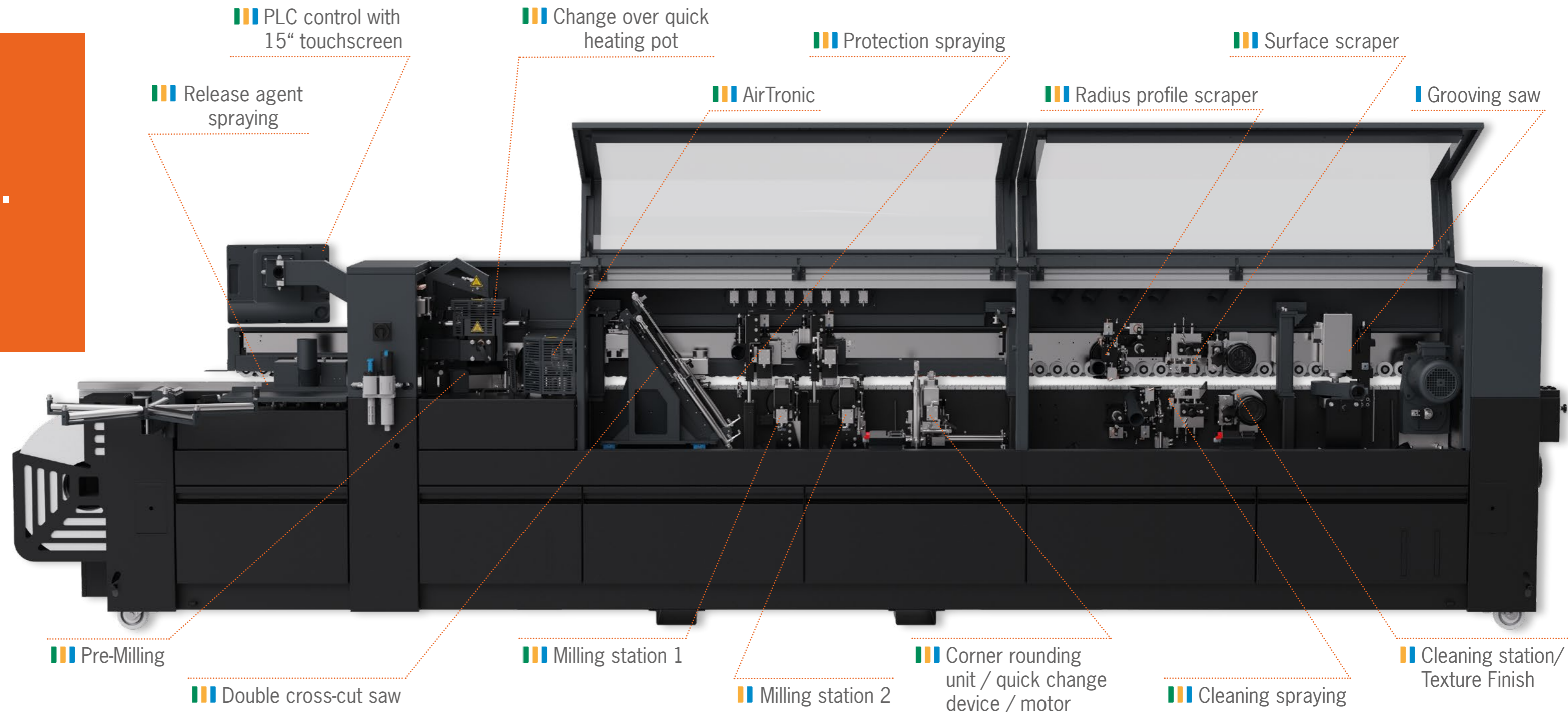
# All options. One goal: The perfect configuration.

The right machine for every requirement –  
precise and efficient.

K34

K36

K37



PLC control with  
15" touchscreen

Change over quick  
heating pot

Protection spraying

Surface scraper

Release agent  
spraying

AirTronic

Radius profile scraper

Grooving saw

Pre-Milling

Double cross-cut saw

Milling station 1

Milling station 2

Corner rounding  
unit / quick change  
device / motor

Cleaning spraying

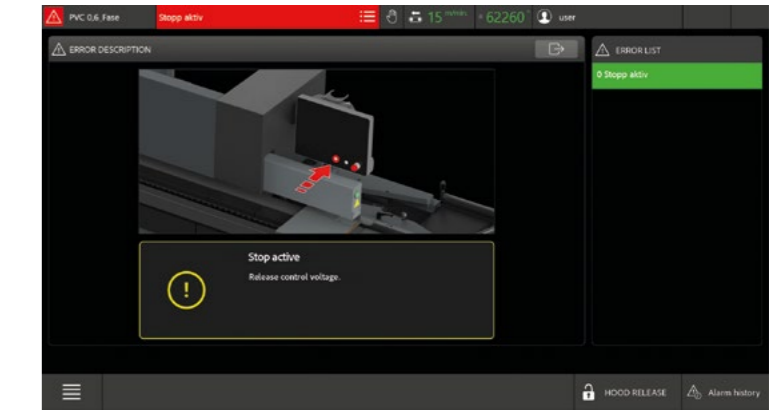
Cleaning station/  
Texture Finish



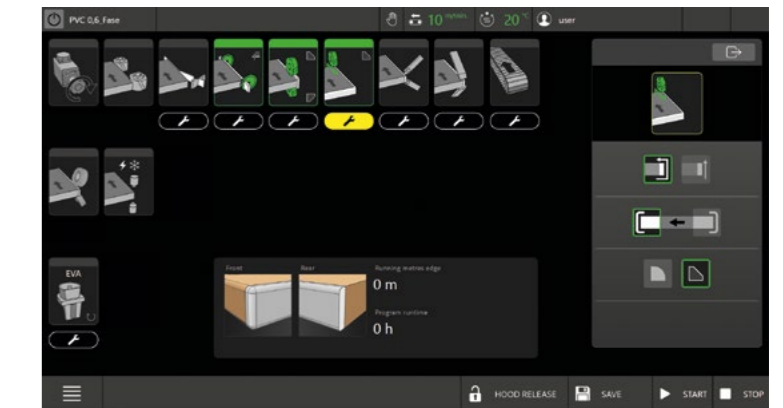
# Control that ensures results.

## Touchscreen control – fast setup, clear operation.

With the 15-inch touchscreen, you can set up your machine directly from the front – quickly, easily, and with complete clarity. All key data and settings are displayed at a glance, so you always have full control. Up to 40 programs store your preferred settings – repeatable with precision and easily adjustable at any time. The integrated 3D view shows your workpiece realistically from the front and back, allowing you to see the result even before processing begins. You stay in control at all times: Workpiece quantities, running meters, and operating times are clearly displayed and can be assigned directly to your jobs. Clear text messages keep you continuously informed about the machine status – for greater transparency and safety. That means simpler operation – and significantly easier maintenance.



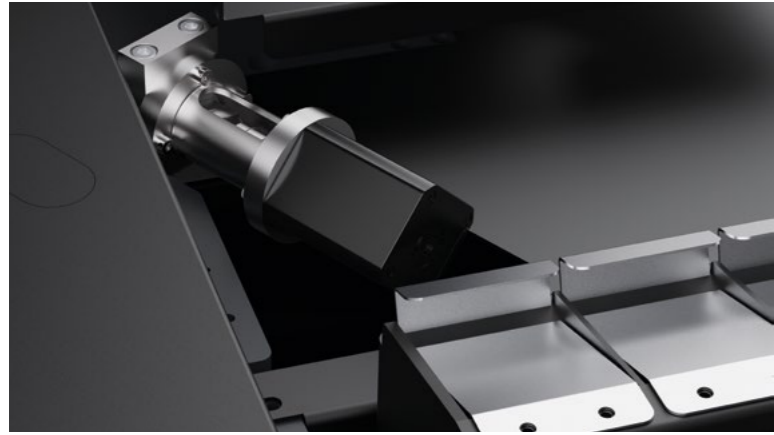
Clear display for easy operation – active states and releases are visualized in real time.



Intuitive, precise, and practical – the clear menu structure makes it easy to set individual processing functions, such as corner rounding.

## ECO Mode – smarter savings

After 15 minutes of idle time, the ECO Mode automatically switches the machine to standby mode. All units – including the glue pot heating system – are shut down. This reduces energy consumption to an absolute minimum and lowers operating costs – sustainably and efficiently.



**Axis package:** With the axis package, you significantly increase the operating comfort of your K-Series. Panel thickness, edge thickness, and joint offset can be conveniently set via the display – the adjustments are carried out electromechanically and with precision. Your settings can be saved in the respective program and recalled accurately at any time. For consistent quality on every workpiece.

**KXX/45**

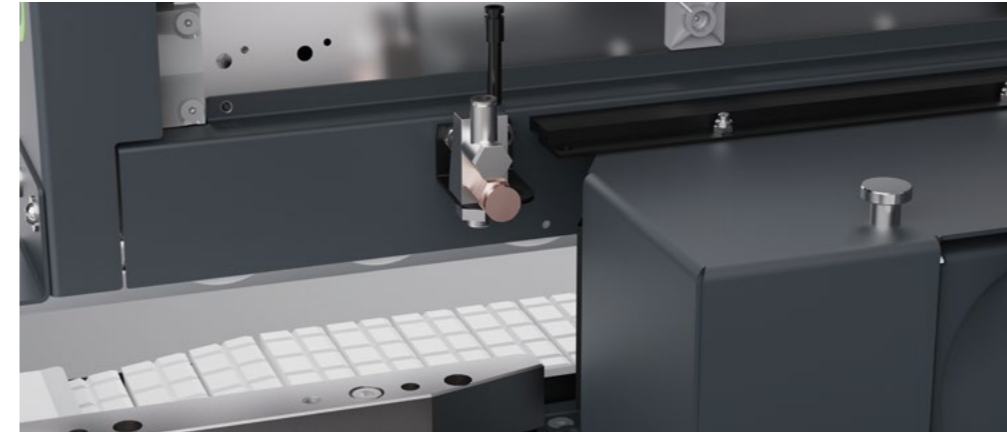


**WhisperCut pre-milling unit:** The WhisperCut pre-milling system with replaceable diamond cutters ensures chip-free results and maximum tool life, thanks to its pull-cut action towards the center of the panel. Two automatically controlled milling heads guarantee ultimate precision – even with demanding materials and sensitive surfaces.

The simple blade replacement significantly reduces sharpening costs and downtime. Unlike conventional systems, there is no need to readjust the machine's base settings after changing tools. Its lightweight aluminum design protects the motors and ensures exceptionally smooth operation.

The milling depth can be adjusted manually with infinite precision or – when equipped with the axis package – automatically up to 3 mm. This allows you to work to final dimensions already during panel cutting.

Motor power: 2 x 2.2 kW  
Speed: 12,000 rpm

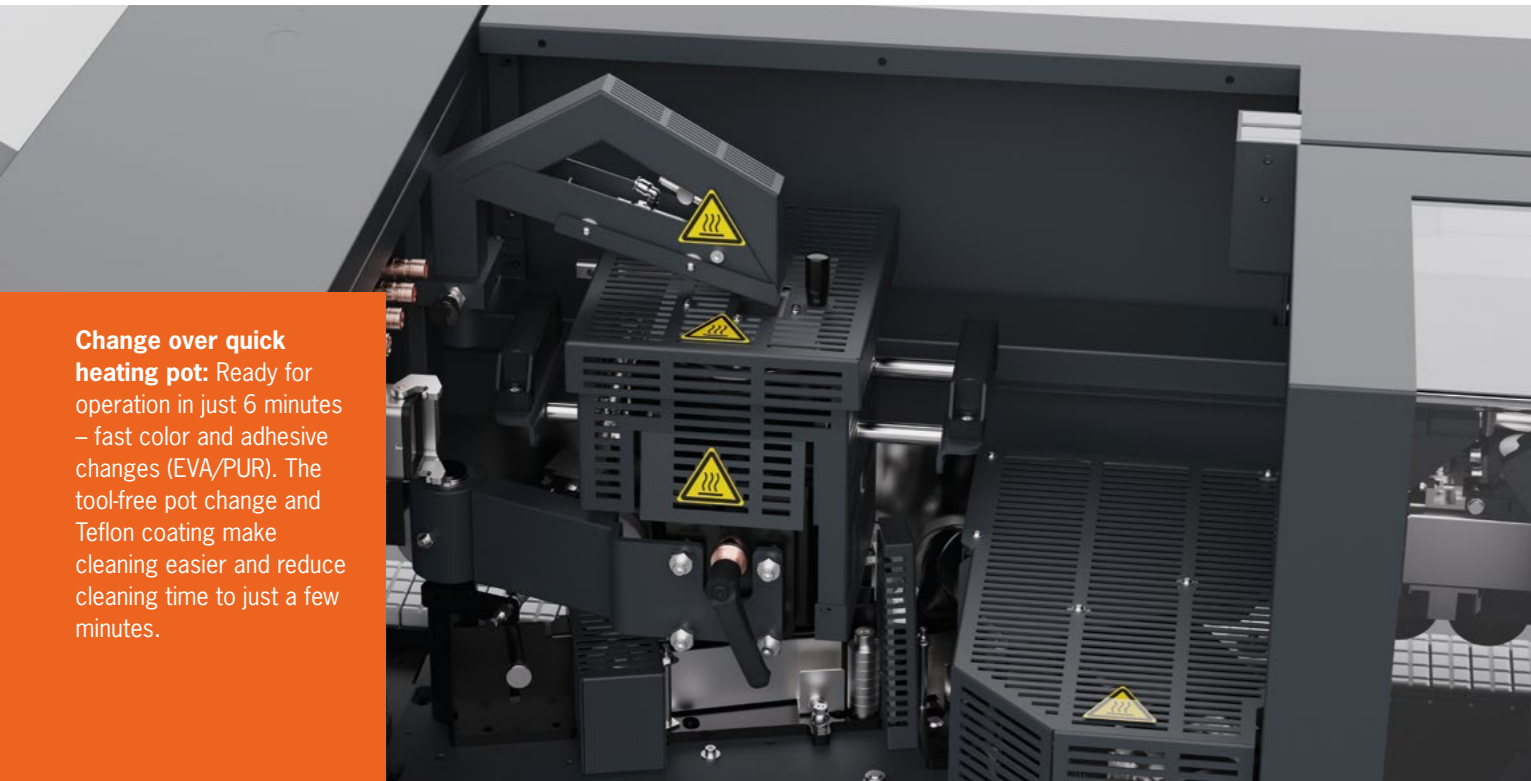


**Release agent spraying unit:** Before edgebanding, the spraying system applies an ultra-thin layer of release agent to the top and bottom edges of the workpiece. This reliably prevents any excess adhesive from sticking to the surface. The result: clean edges and less reworking. This feature is particularly recommended for regular PUR glue processing, as it significantly reduces cleaning intervals and increases process reliability.

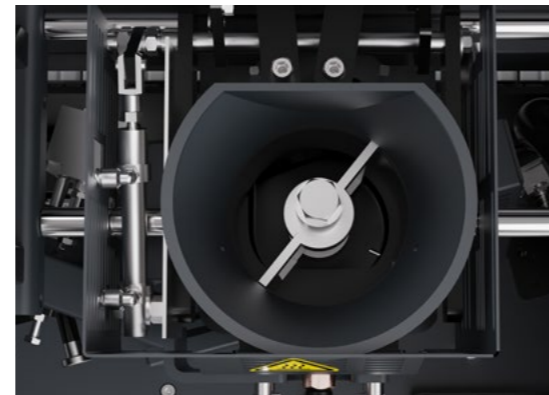
**KXX/24/1**

**Double cross-cut saw with sensory workpiece detection:** Two powerful motors and precision linear guides ensure exact trimming cuts on the front and rear - even at short cycle times. A sensor automatically detects the workpiece, enabling particularly gentle processing. The trimming saws are adjustable by 12.5° and can be set directly via the front display.

Motor power: 2 x 0.28 kW  
Speed: 12,000 rpm



**Change over quick heating pot:** Ready for operation in just 6 minutes – fast color and adhesive changes (EVA/PUR). The tool-free pot change and Teflon coating make cleaning easier and reduce cleaning time to just a few minutes.



**Glue level sensor for interchangeable glue pots:** With the optional fill level sensor for your interchangeable glue pot, you always have the adhesive fill level in view, helping to prevent downtime and bonding errors. Before the pot runs empty, the operator is notified early with clear, plain-text messages.

**KXX/36**

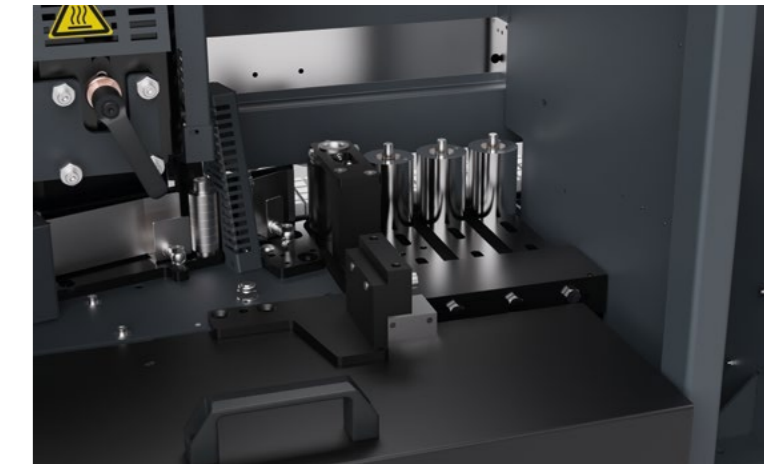


**Automatic glue pot filling:** The generously sized supply container holds up to 5 kg of adhesive granules and feeds the glue pot fully automatically. The machine remains operational at all times, even at high cycle rates, without refills or downtime.

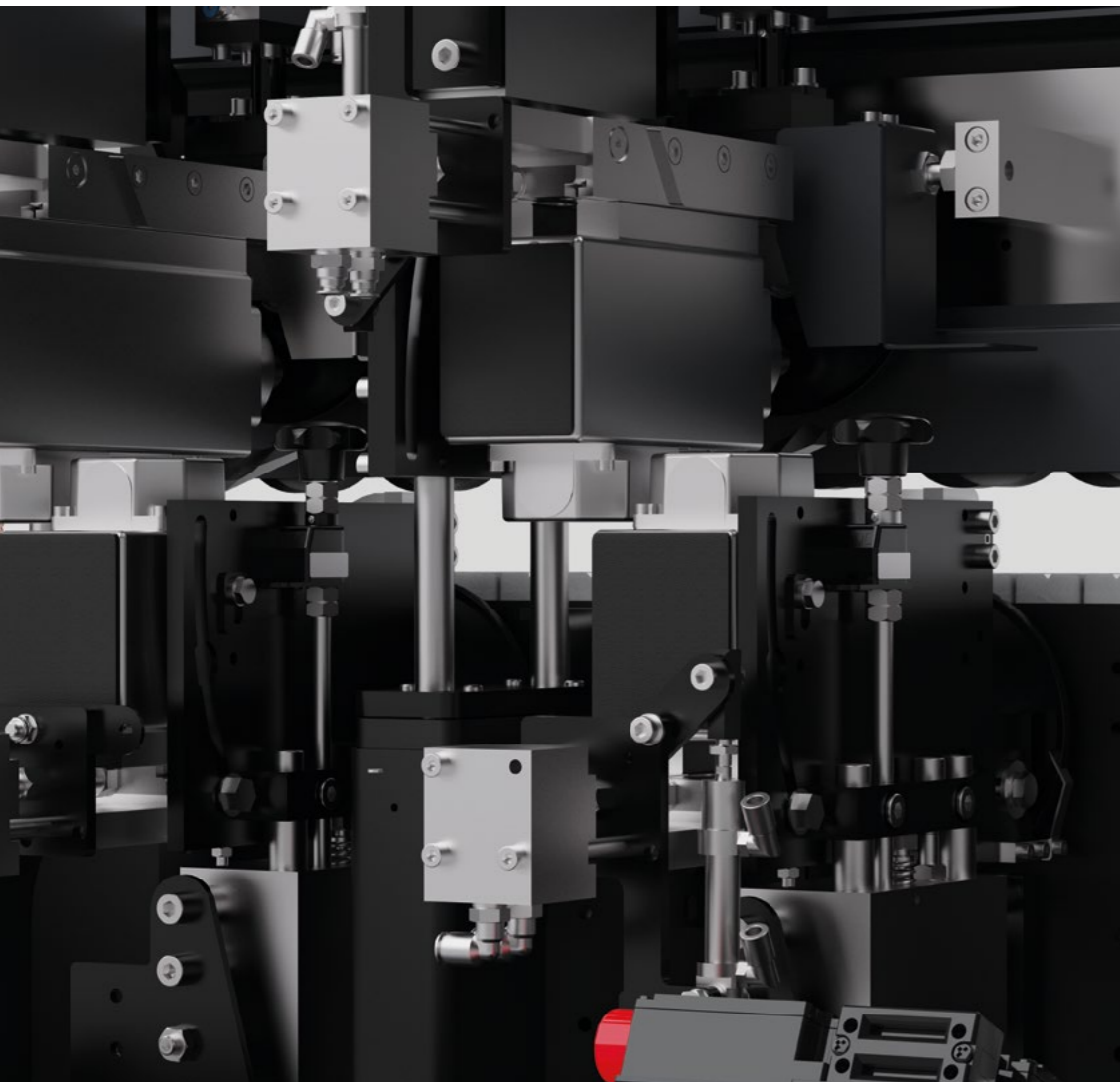
**KXX/36/1**

**AirTronic:** With AirTronic, you achieve a flawless zero-joint appearance using hot-air technology. The edge is fused directly to the workpiece via a high-temperature nozzle, without adhesive, for a homogeneous surface with no visible transitions.

Switching between EVA, PUR, and AirTronic systems is tool-free and takes just a few minutes. AirTronic's heat-up time is only around 3 minutes. Profiles and settings for different edge manufacturers can be easily saved and recalled via the display. This allows you to perfect every workpiece – fast, flexible, and precise.

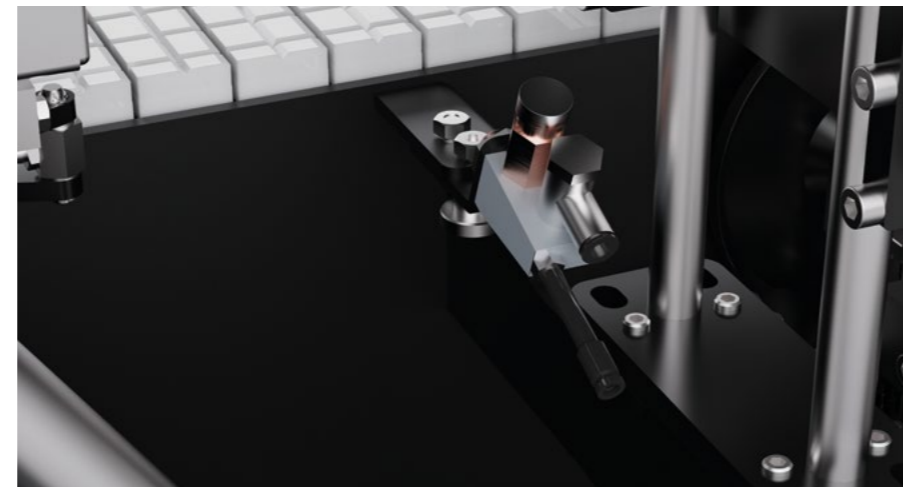


**Pressure zone:** Four spring-loaded pressure rollers reliably press the edge against the top and bottom surfaces of the panel. This ensures optimal adhesion, even with sensitive surfaces or varying materials. In the 8 mm configuration, the first roller is motor-driven to process solid wood edges securely and with high force.



**Milling station:** The combination milling unit offers three selectable machining modes: radius milling, 10° chamfer, and flush trimming. Radius and chamfer settings are conveniently adjusted from the front of the machine. For even greater flexibility, the milling station can optionally be equipped with a 3-point adjustment system – quick to change over and reducing setup times to a minimum. With step cutters for R2, R1, and chamfer, as well as a second milling station, different edge thicknesses can be processed effortlessly, ensuring a perfect finish for every requirement.

Motor power: 2 × 0.37 kW (optional 2 × 0.60 kW)  
Speed: 12,000 rpm



**Protection spraying edge:** An additional fine spray nozzle applies the release agent directly to the surface of the edge band. The increased lubricity reliably prevents scratches and sanding marks on the edge. Any applied protective films also remain securely in place and do not peel off unintentionally.

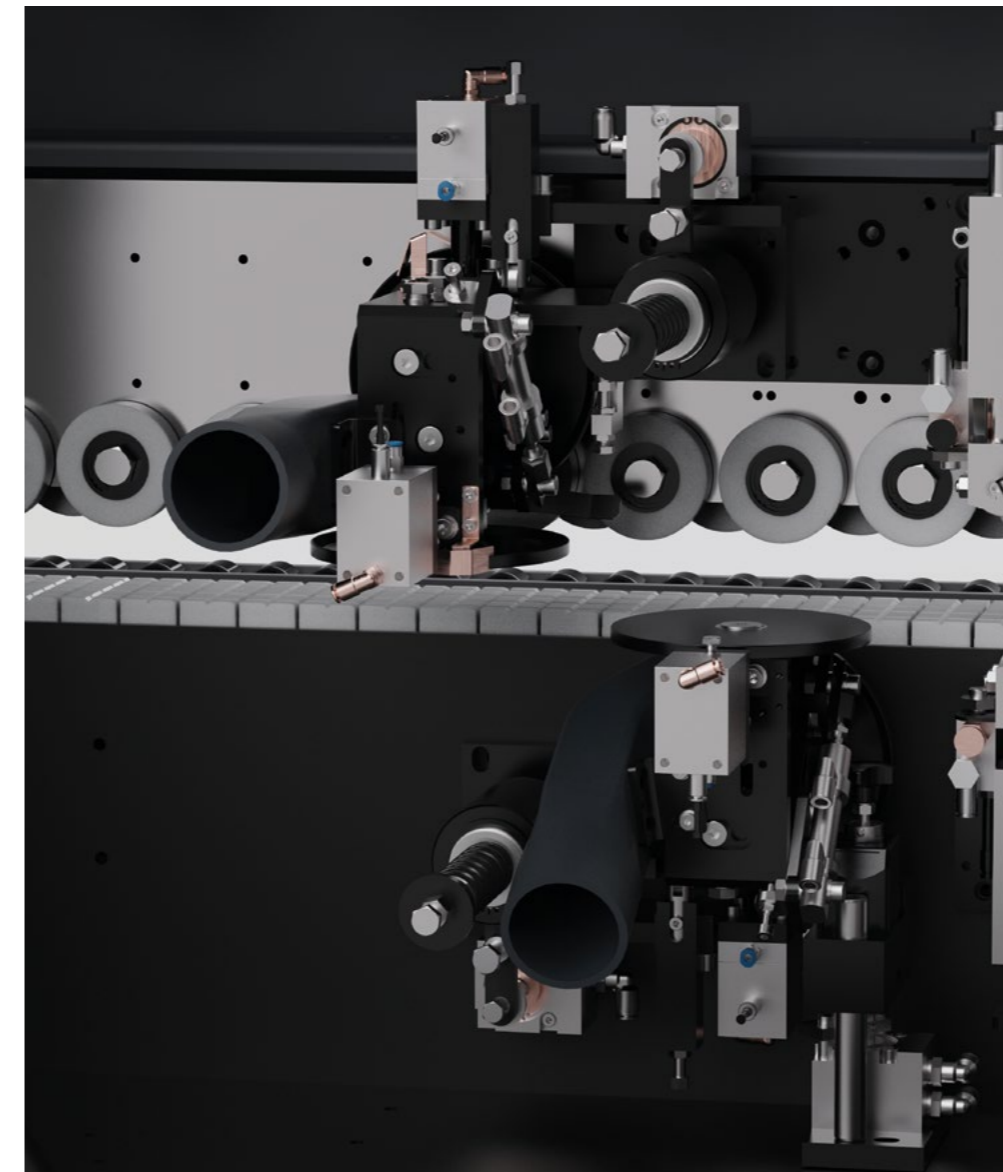
**KXX/25**

**2nd Milling station:**

With the second milling station, you can process different radii with even greater flexibility. Staged rough and finish milling allows larger chip volumes to be removed cleanly. In addition, the unit can be manually swivelled to machine a precise 30° chamfer, ideal for custom edge profiles.

Motor power: 2 × 0.37 kW  
Speed: 12,000 rpm

**KXX/06**

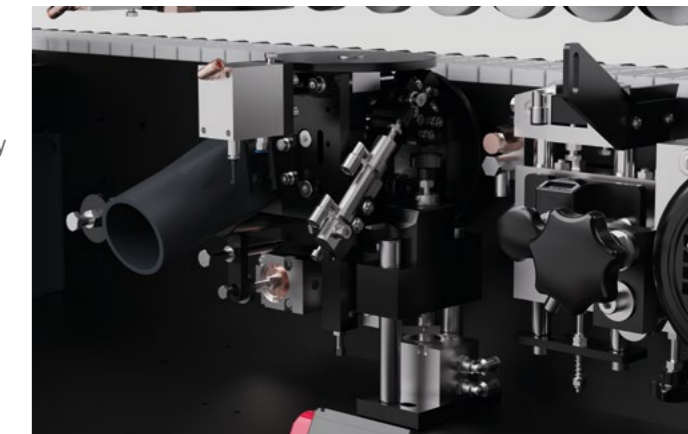


**Radius scraper:** The radius scraper smooths milling and planing marks with an even cutting action – for a clean, refined edge appearance. Adjustment is made directly at the front of the machine; the top and bottom sides can be set independently.

With the optional multi-radius scraper (R1/R2), you can flexibly adapt your machine to classic ABS edges or modern thin edges. Adjustment is tool-free via the display – fast, precise, and without changeover.

**Multi-radius scraper:** With the multi-radius scraper, you can produce R1 and R2 radii without mechanical changeover. Switching is conveniently carried out via the control system, either directly on the display or automatically by selecting a program. This saves time and ensures consistently clean results, even with frequent changes.

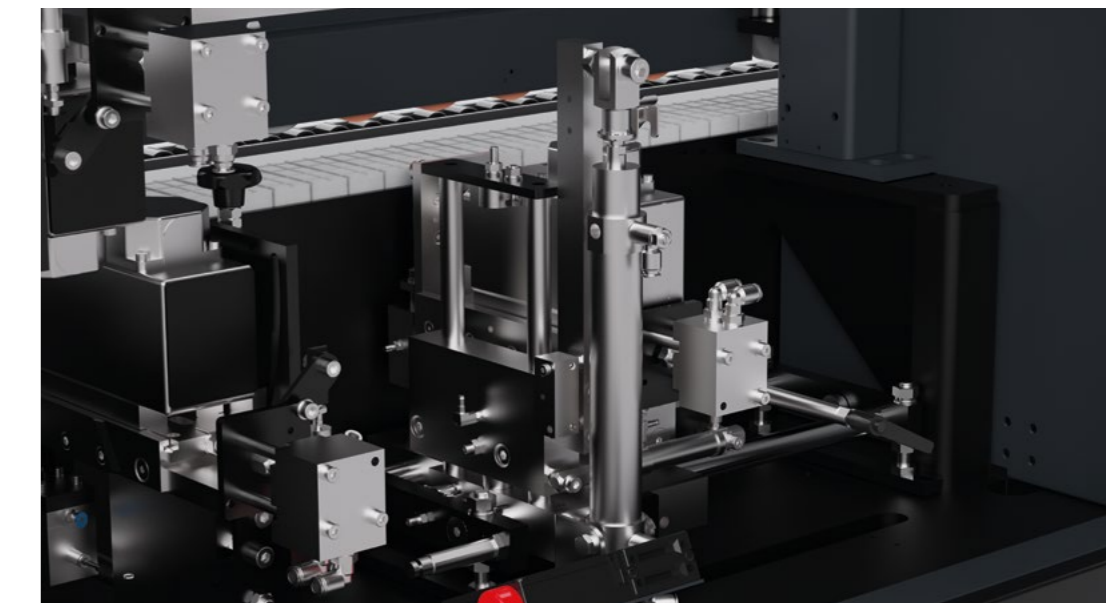
**KXX/09/1**

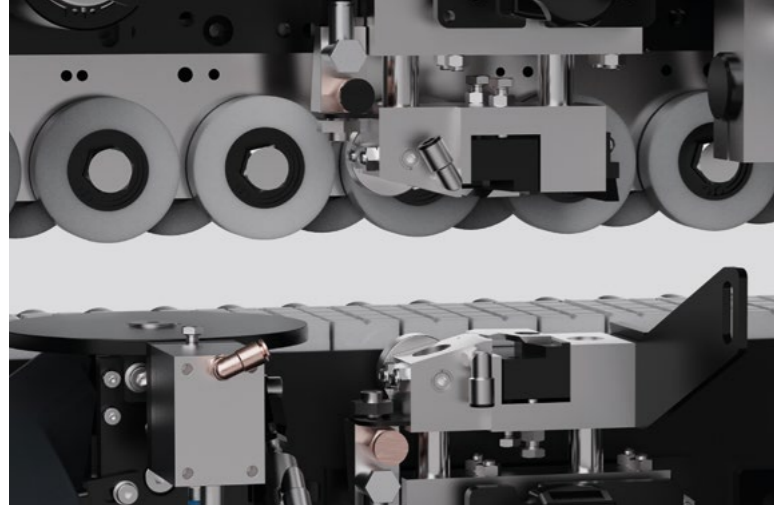


**Corner rounding unit:** With the corner rounding unit, you are perfectly equipped for end-face pre-milling of workpieces – ready to meet any challenge. Thanks to intelligent programming via the display control, individual side- and process-specific settings can be defined. Whether machining the front and/or rear edge, selecting radius or chamfer, or choosing between full edge processing or vertical edge processing only – there are virtually no limits.

An optional interchangeable motor combined with our quick-change preparation provides a fast and efficient solution for handling a wide range of edge thicknesses.

Motor power: 1 × 0.37 kW  
Speed: 12,000 rpm





**Surface scraper:** The dynamically mounted surface scraper ensures the highest manufacturing quality, even with demanding materials. Its wide contact surface precisely and gently tracks the edge material, removes adhesive residues and excess material, and guarantees consistently clean results.



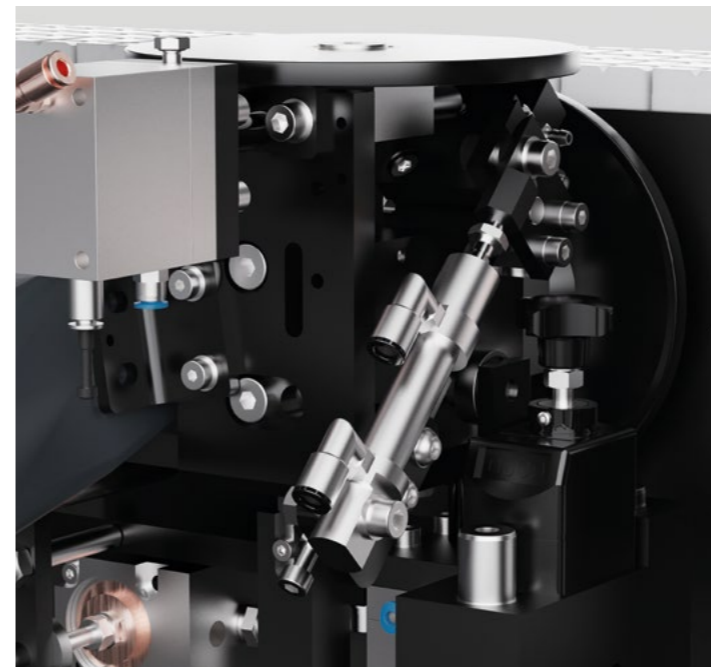
**Cleaning agent spraying unit:** The spray system applies cleaning agent precisely to the top and bottom surfaces of the workpiece. In combination with the cleaning station, adhesive residues and contaminants are effectively removed, for clean edges and a flawless appearance.  
**KXX/24/2**



**Texture Finish:** A release agent spray system combined with brushes ensures clean joint areas. Adhesive residues and liquids are gently removed, for perfectly cleaned surfaces from matte to high-gloss.

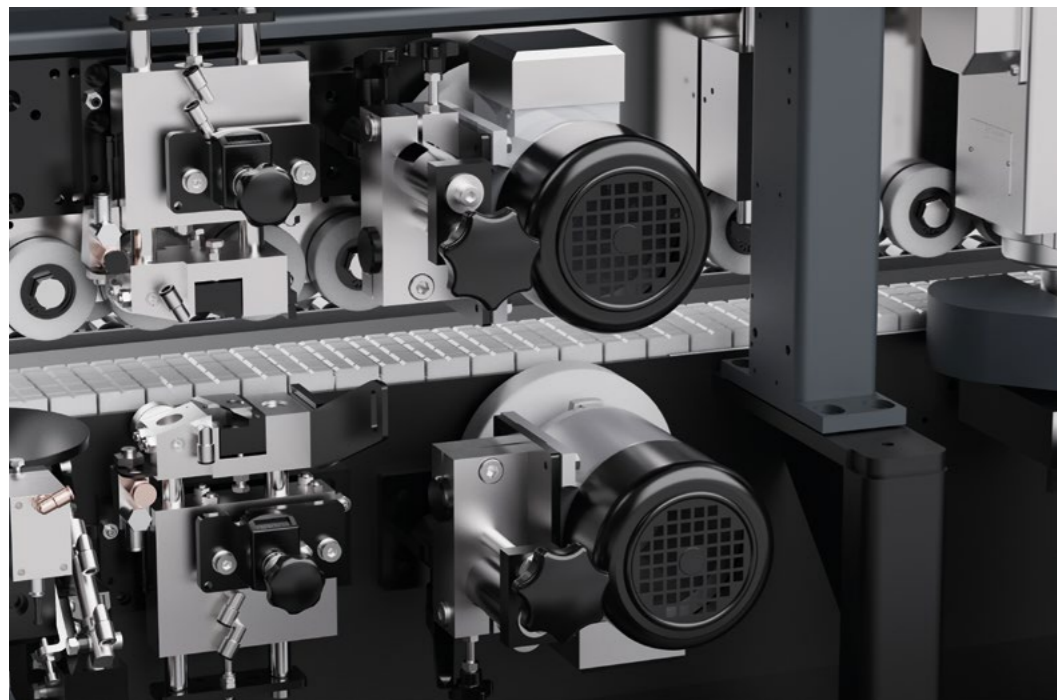


**Additional interchangeable motor – corner rounding unit:** With the preset interchangeable motor including tooling, setup times when changing the corner radius are significantly reduced. Thanks to the integrated quick-change system, the motor can be replaced in the shortest time, completely tool-free, without readjustment or manual settings on the machine.  
**KXX/08/2**



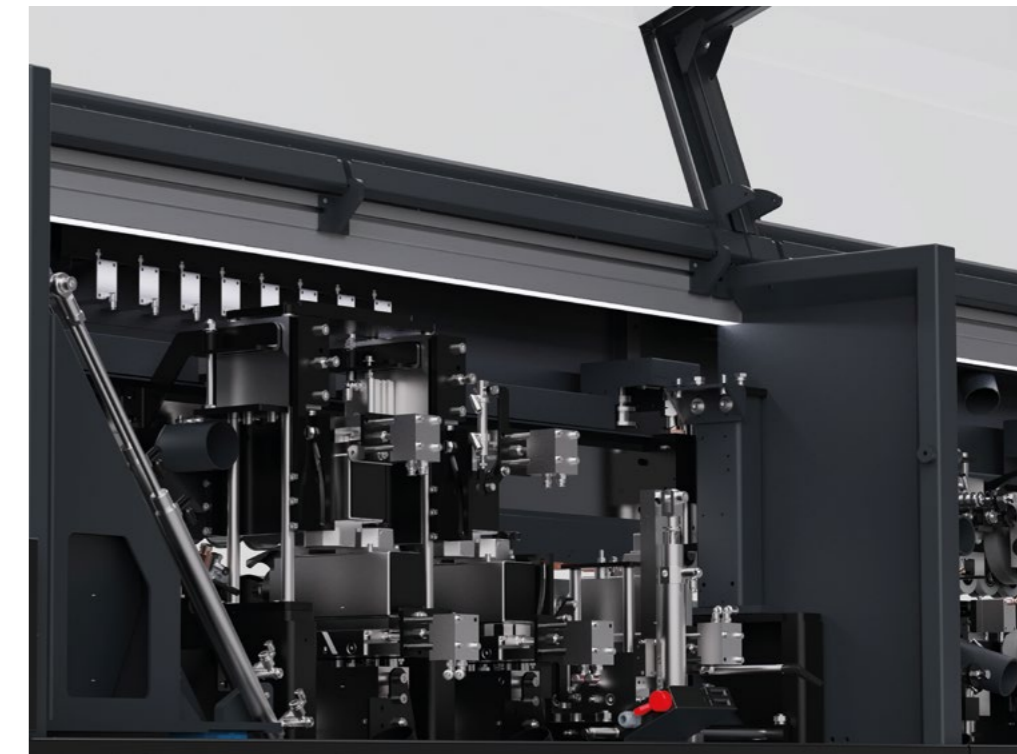
**Nesting for milling station and radius scraper:** Enables the machining of cup hinge and auxiliary hole drillings using the milling unit and radius scraper. Switching is conveniently carried out via the display control on the front of the machine, while workpiece sensing is performed on the underside of the panel.  
**KXX/27**

**Wheels:** The torsion-resistant machine frame ensures precise machining for years to come and guarantees consistently repeatable results, especially in series production of small parts or half-format panels. The well-designed extraction system requires only a single central connection, enabling near-mobile operation even in small workshops. All supply and discharge lines are located on one side of the machine, allowing the ALTENDORF edgebanding machine to be moved flexibly with the optional mobile base whenever space-intensive work is required.  
**KXX/10**



**Cleaning station:** Two individually adjustable polishing wheels, each with 0.18 kW motor power, reliably clean the top and bottom surfaces of the panel, removing excess spray agent and adhesive residues. At the same time, the edge area is visually refreshed, ideal for reducing whitening effects on dark edges. This ensures consistently clean cleaning results, regardless of material type or adhesive system.

**Groove saw:** With the grooving saw unit, you eliminate time-consuming follow-up work on the milling machine. Use the unit either on the end face for tongue-and-groove joints or on the panel face for back panel grooves, combined use is not intended. Machining can be carried out along the entire workpiece length or selectively in defined sections. This increases efficiency, precision, and cost-effectiveness in your production process.



**Indoor LED illumination:** The integrated LED lighting provides optimal visibility inside the machine when setting up, adjusting, and maintaining your machine.  
**KXX/32**

# Accessories

Supporting your daily work – intelligent and efficient.



**Pre-milling up to 60 mm workpiece thickness:** Optionally, the machining height of the jointing and/or corner rounding unit can be increased from 40 mm to 60 mm – for even greater versatility.  
**KXX/20**



**8 mm execution:** Process solid wood edging up to 8 mm edge thickness, thanks to more powerful motors. This protects your tools and extends tool life, making it ideal for high-quality workpieces.  
**KXX/01**



**Air cushion table:** The practical air cushion table makes loading and unloading the machine easier and enables gentle feeding of even heavy or sensitive components.  
**KXX/34**



**Additional roller bar:** Facilitates ergonomic handling of large or heavy workpieces and prevents material sagging outside the machine.  
**KXX/35**



**Edge magazine with interchangeable cassettes cartridges:** Integrated into the machine, it reduces handling steps and setup time – edge material can be changed in under 30 seconds, at ergonomic working height and easily operated even with gloves.



**Pre set-up return system (barbaric):** The machine is factory-prepared for connection to a return system. All required cut-outs for conveyor belts and workpiece guidance are integrated into the machine frame, ensuring seamless integration and automated return handling.  
**KXX/44**



**Heatable infeed fence:** The heated infeed fence brings the panel material to the optimal temperature before processing. This improves adhesive bonding and ensures consistently high quality, even with temperature fluctuations in the workshop or when materials are stored cold.  
**KXX/03**



**Glue pot suction hood:** The suction hood above the glue pot directs generated fumes specifically to an external extraction system. This improves air quality in the workshop and ensures a safe working environment.  
**KXX/46**



**PUR Box:** Our PUR box slows down the curing process of PUR adhesive using a compressed-air-assisted drying method, extending the processing time to up to 7 days before cleaning is required – ideal for regular PUR processing.  
**P01**



**Additional change over quick heating pot:** Perform color and adhesive changes even faster with an additional glue pot. Thanks to the short heat-up time of just 6 minutes, you can get back to work more quickly. The included glue pot stand makes handling your second or third glue pot even more efficient.  
**KXX/14**

# Standard Configuration

The right machine for every requirement. Here you can see at a glance the standard equipment of the K-Series – clear, concise, and easy to compare.

	<b>K34</b>	<b>K36</b>	<b>K37</b>
Manual adjustment of edge thickness, pre-milling thickness and workpiece height	x	x	x
Support plate for edge material	x	x	x
Optical LED indicator for workpiece sequence at the machine infeed	x	x	x
PLC control system (15" touchscreen)	x	x	x
Pre-milling unit (incl. DIA tool) with milling depth up to 3 mm, replaceable insert design (WhisperCut)	x	x	x
Overhead interchangeable glue pot with Teflon coating and adhesive stop function	x	x	x
Glue application to the workpiece for edge material up to 3 mm	x	x	x
Double cross-cut saw with sensory workpiece detection	x	x	x
HF milling station with pneumatic milling adjustment and combi-blade system (radius / chamfer / flush)	x	x	x
2nd HF milling station with double radius milling cutters		o	x
Corner rounding unit with combination unit (radius / chamfer)	x	x	x
Radius scraper with reversible blade	o	x	x
Surface scraper with dual sensing for flush removal of edge overhang	x	x	x
Cleaning station		x	x
Grooving saw unit with tooling			x
Conveyor chain with permanently screwed special chain plates	x	x	x
Bearing-mounted top pressure bar	x	x	x
Pull-out cantilever arm (front side)	x	x	x
Viewing window at the rear of the machine	x	x	x
Chip collection box for the cross-cut saw	x	x	x
Feed speed up to 15 m/min	x	x	x
LED progress indicator	x	x	x
Smart storage solutions	x	x	x
Front-mounted fine adjustment	x	x	x
RGB status bar on the pressure bar	x	x	x

x = standard    o = optional

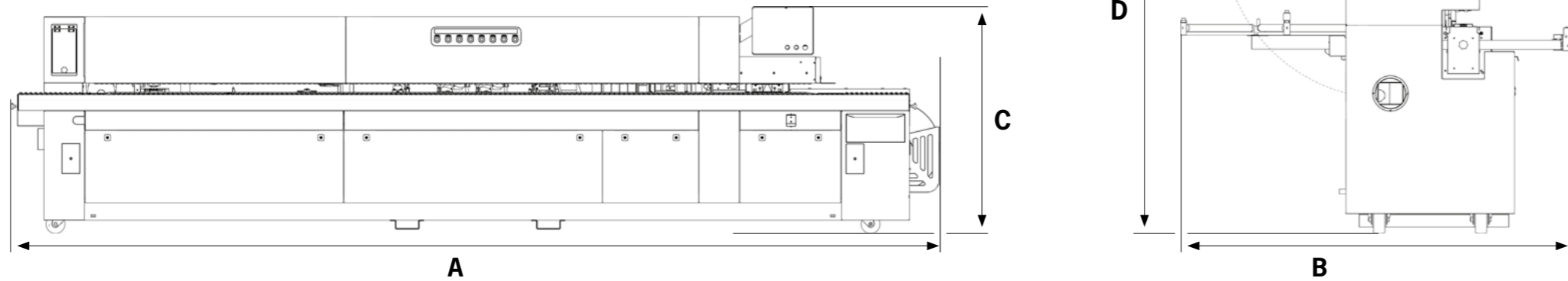
# Equipment Options

These equipment options offer everything you need to take your production to the next level. Select exactly what you need – and turn your edgbanding machine into the perfect solution for your requirements.

	<b>K34</b>	<b>K36</b>	<b>K37</b>
8 mm execution	x	x	x
Heatable infeed fence	x	x	x
2nd milling station (incl. disengagement)		x	
Sep. pneum. milling adjustment (2nd milling station)		x	x
Quick-change device corner rounding	x	x	x
Changeable motor for corner rounding	x	x	x
Radius profile scraper	x		
Multi Radius scraper	x	x	x
Wheels	x	x	x
Additional change over quick heating pot / incl. glue level sensor	x / x	x / x	x / x
Pre-Milling up to 60 mm workpiece thickness	x	x	x
Corner rounding up to 60 mm workpiece thickness	x	x	x
Release agent spraying unit	x	x	x
Cleaning agent spraying unit	x	x	x
Protection spraying edge	x	x	x
Nesting	x	x	x
Pneumatic 3-point adjustment	x	x	x
Multitool for HF milling station	x	x	x
Indoor LED illumination	x	x	x
Air cushion table	x	x	x
Additional roller bar	x	x	x
Glue level sensor	x	x	x
Automatic glue pot refilling system (incl. glue level sensor)	x	x	x
AirTronic	x	x	x
Pre-set return system (babaric)	x	x	x
Axis package	x	x	x
Glue pot suction hood	x	x	x
Additional workpiece in- and outfeed support	x	x	x
PUR Box	x	x	x
Texture Finish	x	x	x
Edge magazine with interchangeable cassettes cartridges	x	x	x

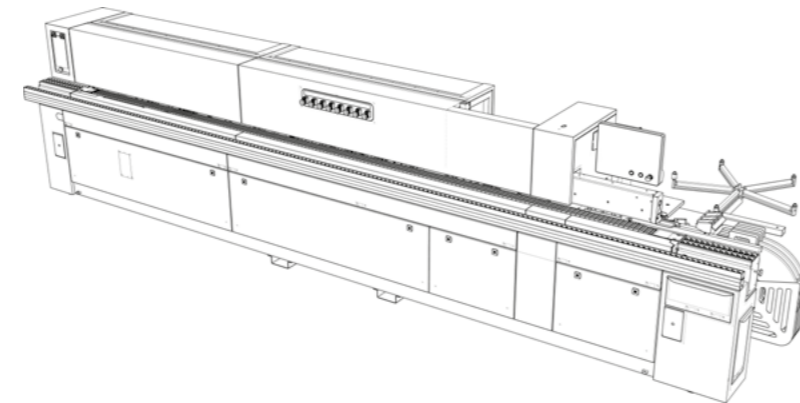
# Space Requirements

The space requirement diagram shows the necessary floor and safety clearances for installation and maintenance. Workpiece dimensions must also be taken into account.



## SPACE REQUIREMENTS

	A	B	C	D
<b>K 34</b>	4.750 mm	2.030 mm	1.560 mm	1.980 mm
<b>K 36</b>	5.250 mm	2.030 mm	1.560 mm	1.980 mm
<b>K 37</b>	6.000 mm	2.030 mm	1.560 mm	1.980 mm



# Technical details compared.

Find out which K-Series model is the perfect match for your needs.



	<b>K34</b>	<b>K36</b>	<b>K37</b>
<b>Max. pre-milling thickness</b>	3 mm	3 mm	3 mm
<b>Max. edge thickness</b>	3 mm	3 mm	3 mm
<b>Min/Max. workpiece thickness</b>	8 - 60 mm	8 - 60 mm	8 - 60 mm
<b>Min. workpiece width</b>	80 mm	80 mm	80 mm
<b>Min. workpiece length</b>	120 mm*	120 mm*	120 mm*
<b>Feed speed</b>	approx. 15 m/min	approx. 15 m/min	approx. 15 m/min
<b>Ready for operations</b>	approx. 6 min	approx. 6 min	approx. 6 min
<b>Max. power consumption</b>	Ø 14 kW	Ø 14 kW	Ø 14,6 kW
<b>Electrical connection</b>	400 V – 3-phase – 50 Hz	400 V – 3-phase – 50 Hz	400 V – 3-phase – 50 Hz
<b>Machine dimensions</b>	approx. 4.750 x 2.030 x 1.560 mm	approx. 5.250 x 2.030 x 1.560 mm	approx. 6.000 x 2.030 x 1.560 mm
<b>Work table height</b>	940 mm	940 mm	940 mm
<b>Extraction socket</b>	Ø 1 x 80 mm, Ø 1 x 140 mm	Ø 1 x 80 mm, Ø 1 x 140 mm	Ø 1 x 80 mm, Ø 1 x 140 mm
<b>Weight</b>	approx. 1.550 kg	approx. 1.750 kg	approx. 2.050 kg

\* up to 7 m/min feed speed



# Configure online now

Discover our product configurators – designed for your individual needs.

Each configuration is unique, just like your requirements. Our configurators are intuitive, flexible, and accessible anywhere. Whether you're configuring a sliding table saw or an edge-banding machine, you can create your ideal setup – for greater efficiency and success.



## Easy operation

Configuration has never been easier – intuitive interface, visual feedback, and instant results.



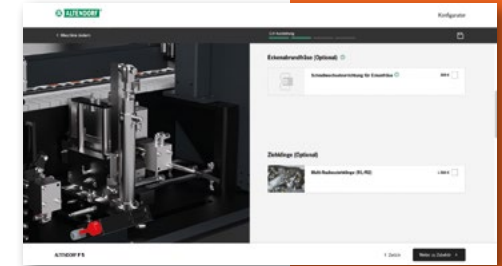
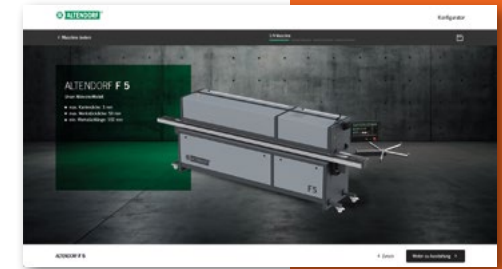
## Flexible editing

Configure your ideal machine anytime, anywhere.



## According to your needs

Your requirements are unique. With our configurators, you can create machines perfectly matched to your projects and materials.



*Configure here*



[configurator.altendorfgroup.com](http://configurator.altendorfgroup.com)

**Your vision. Our technology.  
Perfect configuration.**



Altendorf GmbH – Wettinerallee 43/45, 32429 Minden, Germany, [www.altendorf.com](http://www.altendorf.com)

© Altendorf® 01/2026 – Order no.: K9690.0653 – Technical specifications subject to change.